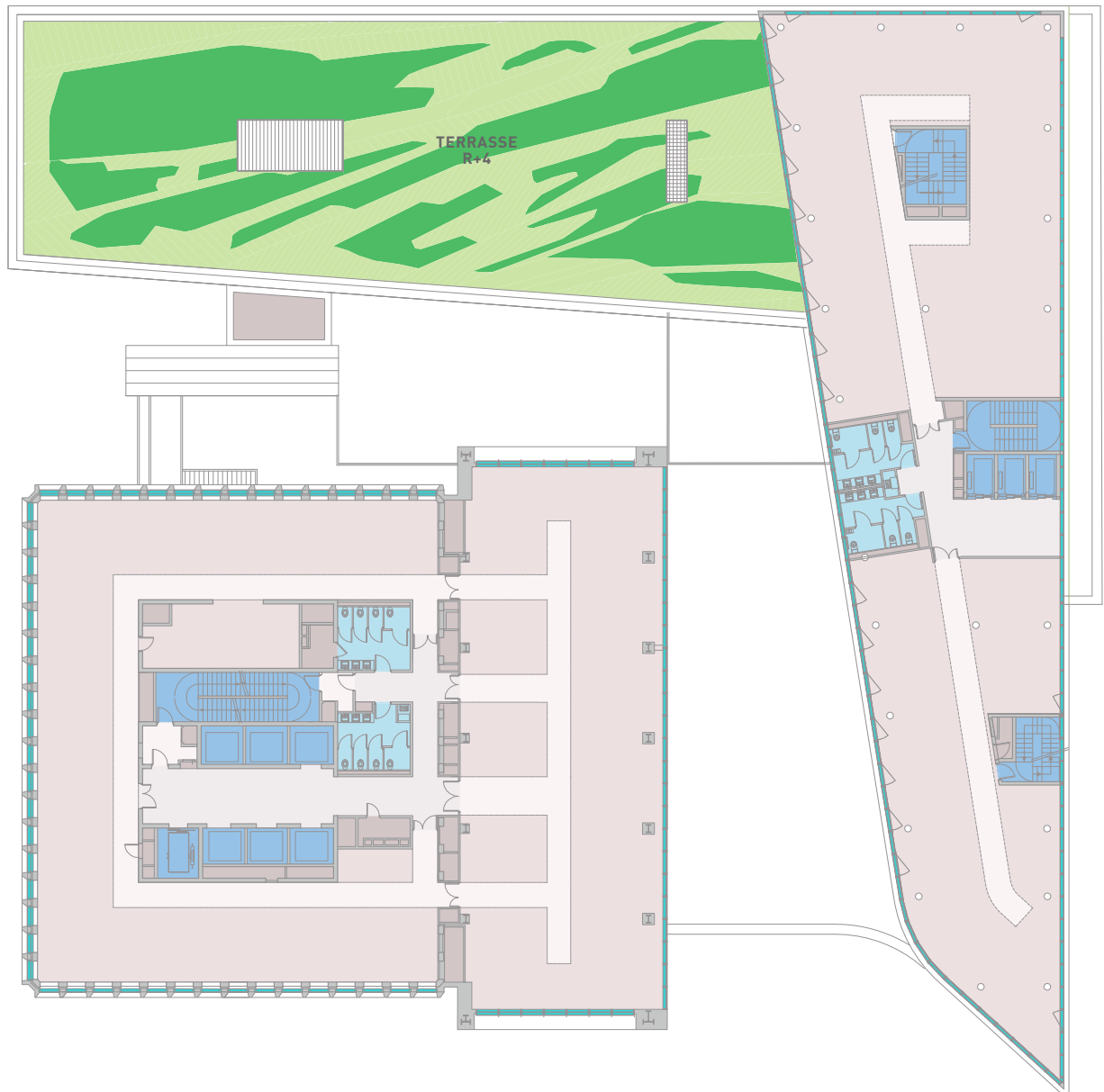


# R+4/11 TOUR R+4/8



SURFACE : 1 716 M<sup>2</sup>  
POSTES DE TRAVAIL : 140



- |                          |                            |                           |
|--------------------------|----------------------------|---------------------------|
| Circulation verticales   | Bureaux                    | Services                  |
| Circulation horizontales | Sanitaires                 | Jardin / patio / terrasse |
| Espaces communs          | Locaux techniques / Divers |                           |